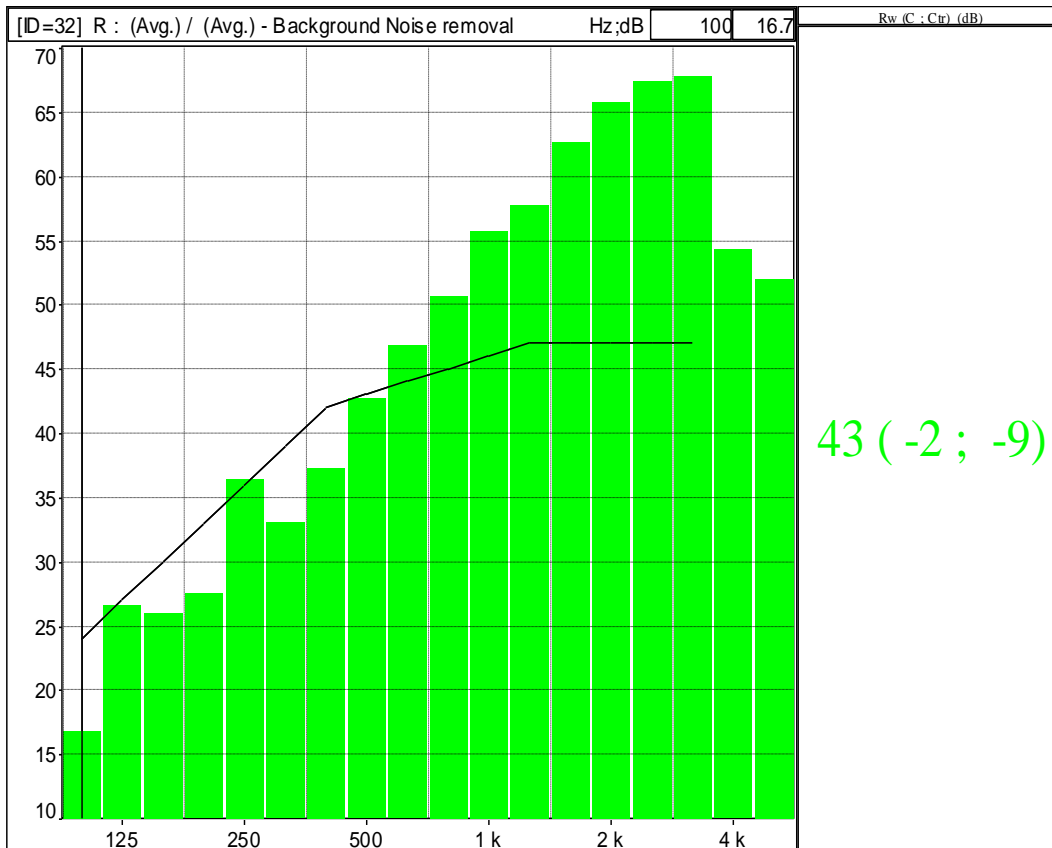
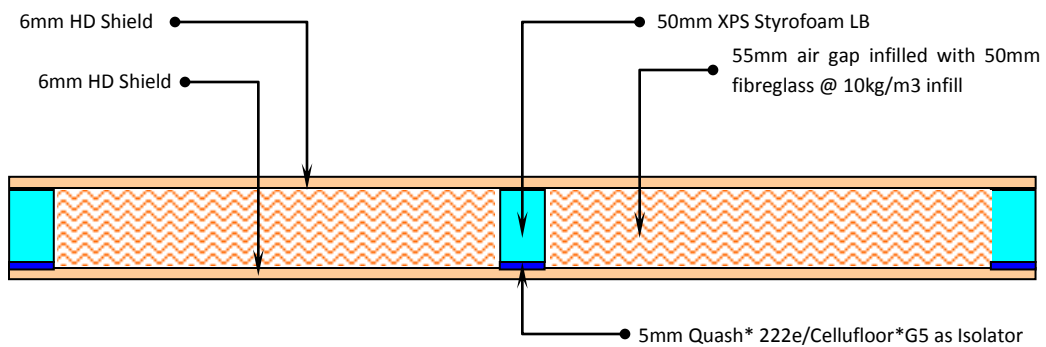


Date	Friday, 13th February 2009 @ 3.30pm	Sample Supervision	SH Lee (MISB)
Test Facilities	UiTM Acoustic Test Laboratory, Shah Alam	Technical Supervision	Terence Law (MISB)
Test By	Professor Seti Mariam, Faculty of Architecture	Checked By	Yogi Wong
Instruments	01dB, France (www.01dB.com)	Commissioned By	Victor Poon (Sky Zip)
Test Targets	Random Production Check		

Model **Cogent Panel Model HDRe44 (2HD6-55)**

Composition

Layer 1	6mm HD Shield @ 1355 kg/m3 weighted before tests
Layer 2	50mm XPS Dow Styrofoam LB as lightweight rigid framework
Layer 3	5mm Quash* 222e/Cellulfloor*G5 as Isolator Strip
Layer 4	6mm HD Shield @ 1354 kg/m3 weighted before tests



**Building Test Sample**

Date Friday, 13<sup>th</sup> February 2009 @ 3.30pm  
 Test Facilities UiTM Acoustic Test Laboratory, Shah Alam  
 Test By Professor Seti Mariam, Faculty of Architecture  
 Panels Cogent Model HDRe44 Prefabricated  
 Panels Size 1220 x 2275 x 67mm thk  
 Test Opening 9.5m2

D:\SKYZIP\SAMPLE 1stcwithoutacon.CMG	
ID	32
Family	Sound insulation
Type	R / Rw
X axis resolution	1/3
Date	02/13/09 11:25:58
location	(Avg.) / (Avg.)
Comments	Background Noise removal
Channel	
Hz	dB
100	16.7
125	26.5
160	25.9
200	27.4
250	36.3
315	33.0
400	37.2
500	42.6
630	46.8
800	50.6
1 k	55.7
1.25 k	57.7
1.6 k	62.6
2 k	65.7
2.5 k	67.4
3.15 k	67.8
4 k	54.2
5 k	51.9
Standard value	Rw (C ; Ctr) (dB) = 43 ( -2 ; -9)



Repairing the Isolation joint between chambers before tests.



View from Chamber 2 – Receiving Room

**Special Conditions for Building Application**

- a. 125 Hz > 22 dB
- b. 1000Hz > 40 dB

**Thermal Values**

Thermal Resistance/U Values may be improved with the addition of infill.  
 For more compatible options, please contact our offices.  
 The purpose of this test concentrates on Acoustic Performance Only.

