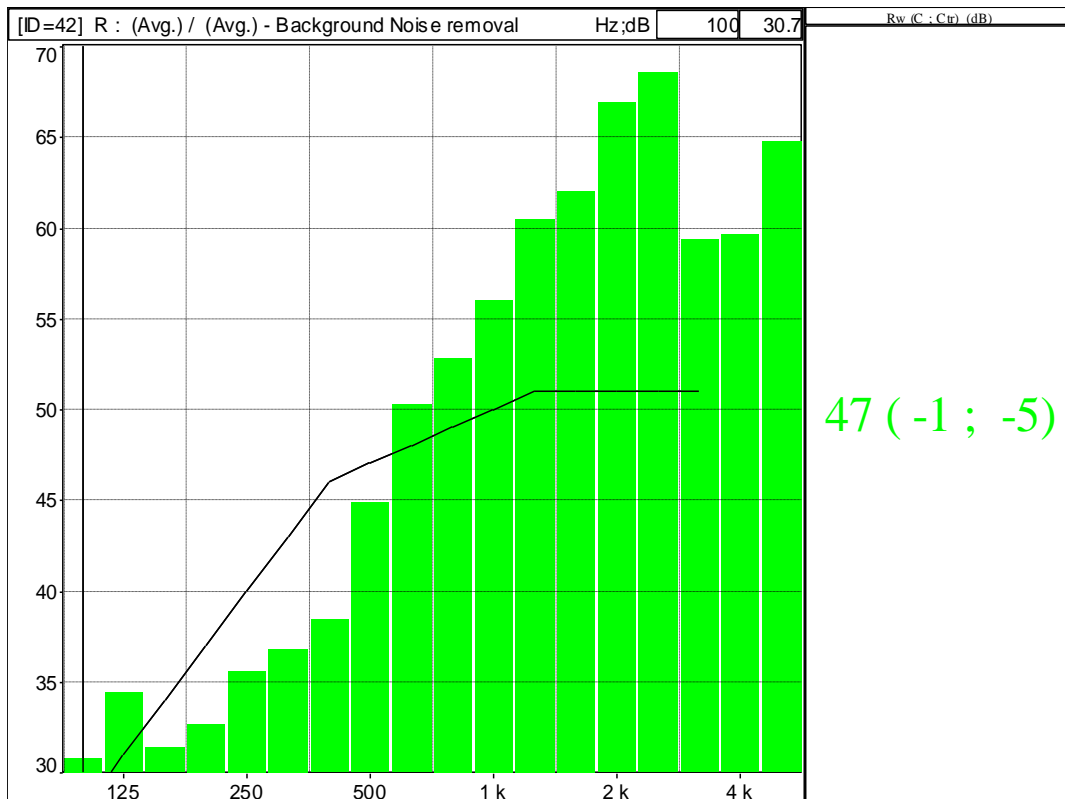
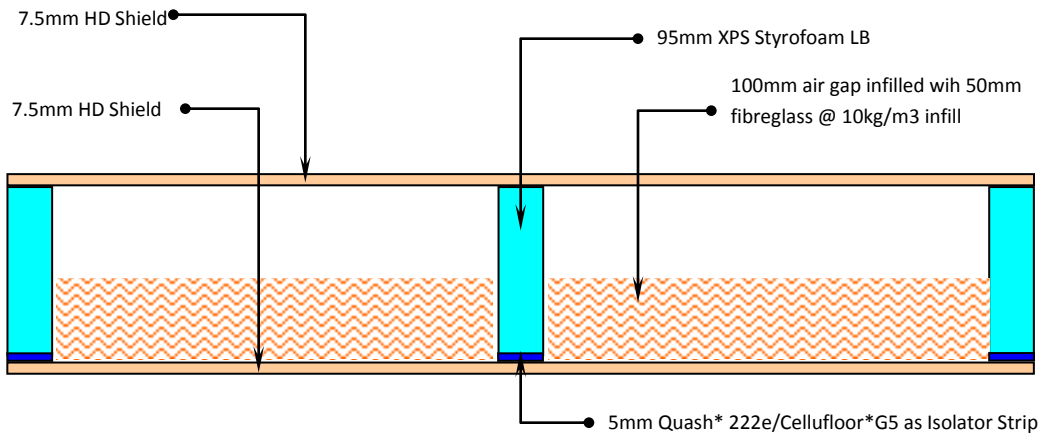


Date	Friday, 20th February 2009 @ 11.30am		Page 1 of 2
Test Facilities	UiTM Acoustic Test Laboratory, Shah Alam	Sample Supervision	SH Lee (MISB)
Test By	Professor Seti Mariam, Faculty of Architecture	Technical Supervision	Terence Law (MISB)
Instruments	01dB, France (www.01dB.com)	Checked By	Yogi Wong
Test Targets	Random Production Check	Commissioned By	MISB

Model **Cogent Panel Model HDRe47 (2HD75-100)**

Composition

Layer 1	7.5mm HD Shield @ 1355 kg/m3 weighted before tests
Layer 2	95mm XPS Styrofoam LB lightweight framework infill with 50mm fiberglass @ 10kg/m3
Layer 3	5mm Quash* 222e/Cellufloor*G5 as Isolator Strip
Layer 4	7.5mm HD Shield @ 1350 kg/m3 weighted before tests



Building Test Sample

Date Friday, 20th February 2009 @ 11.30am
 Test Facilities UiTM Acoustic Test Laboratory, Shah Alam
 Test By Professor Seti Mariam, Faculty of Architecture
 Panels Cogent Model 2HDRe75-100 Prefabricated
 Panels Size 1220 x 2275 x 115mm thk
 Test Opening 9.5m²

Test Photos

D:\MSB\2HDRe75-100.CMG	
ID	42
Family	Sound insulation
Type	R / Rw
X axis resolution	1/3
Date	02/20/09 12:18:52
location	(Avg.) / (Avg.)
Comments	Background Noise removal
Channel	
Hz	dB
100	30.7
125	34.3
160	31.3
200	32.6
250	35.5
315	36.7
400	38.4
500	44.8
630	50.2
800	52.8
1 k	56.0
1.25 k	60.4
1.6 k	62.0
2 k	66.9
2.5 k	68.5
3.15 k	59.3
4 k	59.6
5 k	64.7
Standard value	Rw (C ; Ctr) (dB) = 47 (-1 ; -5)

NB Test sample of 115mm width exceeded Chamber 1 timber beam at test opening by 2mm.

Special Conditions for Building Systems > Rw 45 to Rw 50

- 125 Hz > 30 dB
- 1000Hz > 45 dB

Thermal Values

Thermal Resistance/U Values may be improved with the addition of infill.
 For more compatible options, please contact our offices.
 The purpose of this test concentrates on Acoustic Performance Only.

