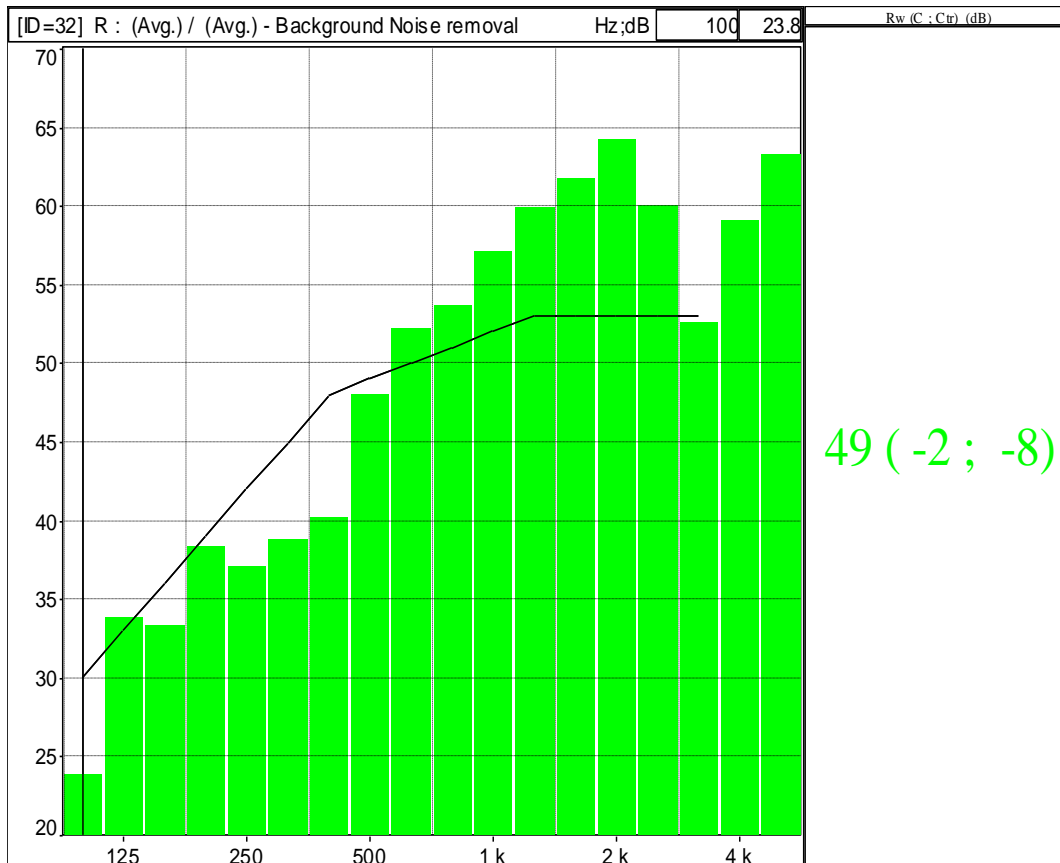
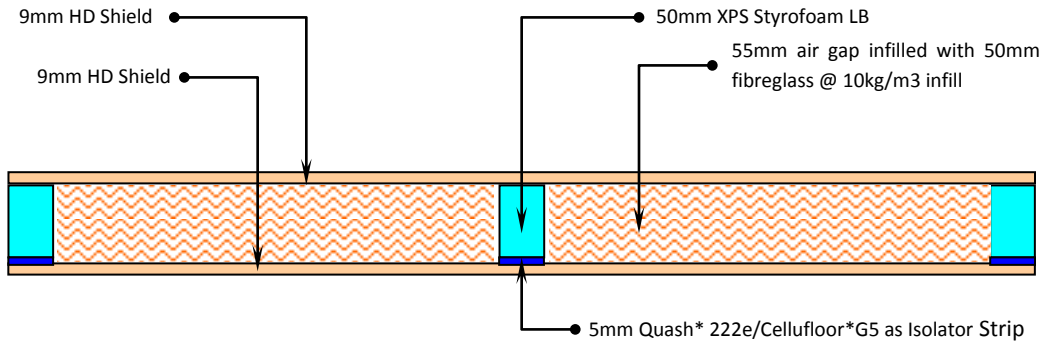


| | | | |
|-----------------|--|-----------------------|--------------------|
| Date | Monday, 23 rd February 2009@ 2.00pm | Sample Supervision | SH Lee (MISB) |
| Test Facilities | UiTM Acoustic Test Laboratory, Shah Alam | Technical Supervision | Terence Law (MISB) |
| Test By | Professor Seti Mariam, Faculty of Architecture | Checked By | Yogi Wong |
| Instruments | 01dB, France (www.01dB.com) | Commissioned By | MISB |
| Test Targets | Random Production Check | | |

Model **Cogent Panel Model HDRe49 (2HDRe90-55)**

Composition

| | |
|---------|---|
| Layer 1 | 9mm HD Shield @ 1352 kg/m3 weighted before tests |
| Layer 2 | 50mm XPS Styrofoam LB lightweight framework infill with 50mm fiberglass @ 10kg/m3 |
| Layer 3 | 5mm Quash* 222e/Cellufloor*G5 as Isolator Strip |
| Layer 4 | 9mm HD Shield @ 1352 kg/m3 weighted before tests |



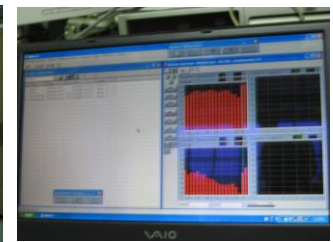
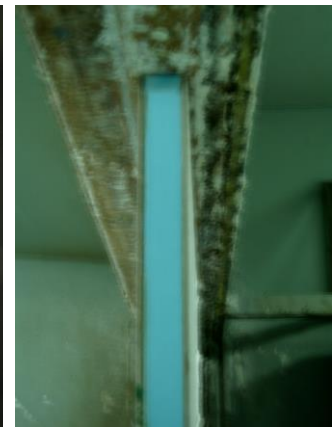
Building Test Sample

Date Monday, 23rd February 2009 @ 2.00pm
 Test Facilities UiTM Acoustic Test Laboratory, Shah Alam
 Test By Professor Seti Mariam, Faculty of Architecture
 Panels Cogent Model HDRe49 (2HD-55) Prefabricated
 Panels Size 1220 x 2275 x 73mm thk
 Test Opening 9.5m²

Test Photos



| D:\MISB\2HDRe90-55.CMG | |
|------------------------|-----------------------------------|
| ID | 32 |
| Family | Sound insulation |
| Type | R / Rw |
| X axis resolution | 1/3 |
| Date | 02/23/09 14:33:23 |
| location | (Avg.) / (Avg.) |
| Comments | Background Noise removal |
| Channel | |
| Hz | dB |
| 100 | 23.8 |
| 125 | 33.8 |
| 160 | 33.3 |
| 200 | 38.3 |
| 250 | 37.0 |
| 315 | 38.7 |
| 400 | 40.1 |
| 500 | 48.0 |
| 630 | 52.1 |
| 800 | 53.6 |
| 1 k | 57.1 |
| 1.25 k | 59.9 |
| 1.6 k | 61.7 |
| 2 k | 64.1 |
| 2.5 k | 60.0 |
| 3.15 k | 52.6 |
| 4 k | 59.0 |
| 5 k | 63.2 |
| Standard value | Rw (C ; Ctr) (dB) = 49 (-2 ; -8) |



Special Conditions for Building Systems > Rw 45 to Rw 50

- a. 125 Hz > 30 dB
- b. 1000Hz > 45 dB

Thermal Values

Thermal Resistance/U Values may be improved with the addition of infill.
 For more compatible options, please contact our offices.
 The purpose of this test concentrates on Acoustic Performance Only.