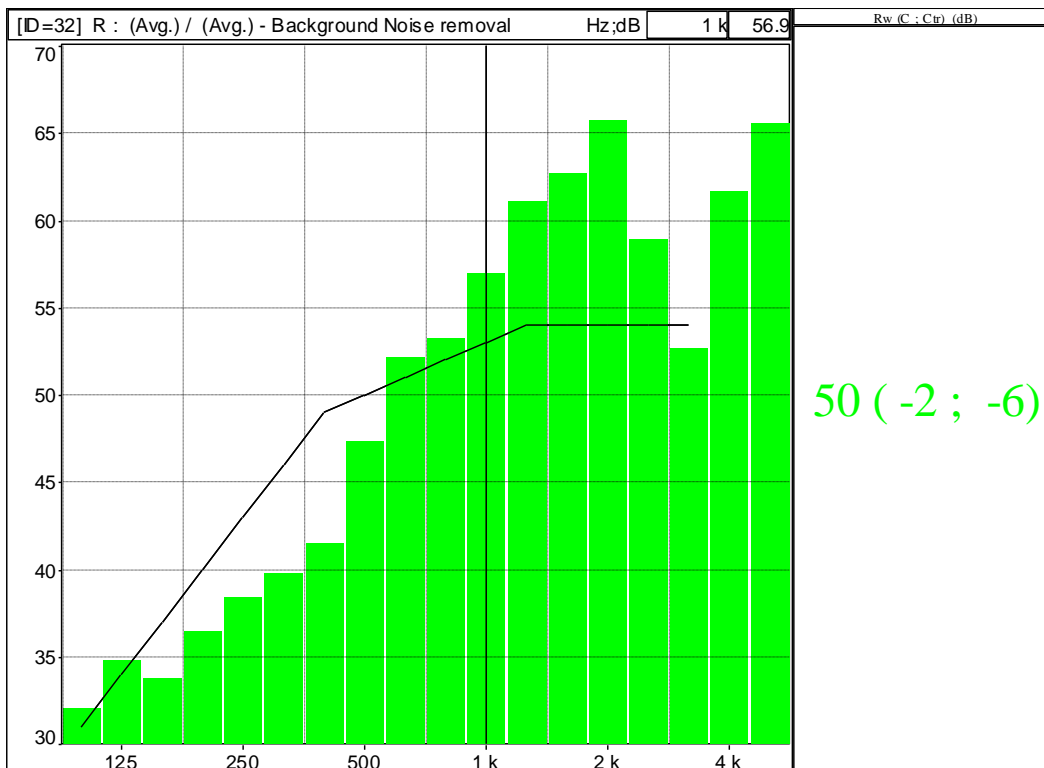
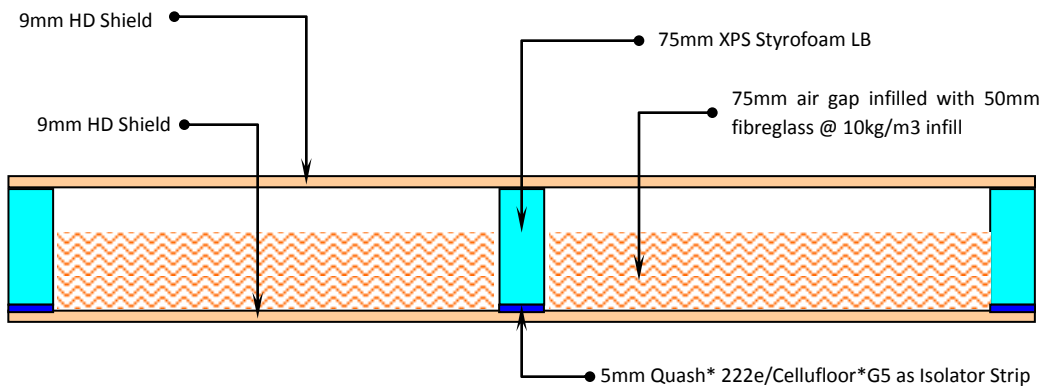


Date	Friday, 20th February 2009@ 5.00pm	Page 1 of 2
Test Facilities	UiTM Acoustic Test Laboratory, Shah Alam	Sample Supervision
Test By	Professor Seti Mariam, Faculty of Architecture	SH Lee (MISB)
Instruments	01dB, France (www.01dB.com)	Technical Supervision
Test Targets	Random Production Check	Terence Law (MISB)
		Checked By
		Yogi Wong
		Commissioned By
		MISB

Model **Cogent Panel Model HDRe50 (2HDRe90-80)**

Composition

Layer 1	9mm HD Shield @ 1350 kg/m3 weighted before tests
Layer 2	75mm XPS Styrofoam LB lightweight framework infill with 50mm fiberglass @ 10kg/m3
Layer 3	5mm Quash* 222e/Cellulfloor*G5 as Isolator Strip
Layer 4	9mm HD Shield @ 1350 kg/m3 weighted before tests



Building Test Sample

Date Friday, 20th February 2009 @ 4.00pm
 Test Facilities UiTM Acoustic Test Laboratory, Shah Alam
 Test By Professor Seti Mariam, Faculty of Architecture
 Panels Cogent Model HDRe50 (2HD90-80) Prefabricated
 Panels Size 1220 x 2275 x 98mm thk
 Test Opening 9.5m²

Test Photos

D:\MISB\2hdre90-80.CMG	
ID	32
Family	Sound insulation
Type	R / Rw
X axis resolution	1/3
Date	02/20/09 17:58:46
location	(Avg.) / (Avg.)
Comments	Background Noise removal
Channel	
Hz	dB
100	32.0
125	34.8
160	33.7
200	36.4
250	38.4
315	39.7
400	41.5
500	47.3
630	52.1
800	53.2
1 k	56.9
1.25 k	61.0
1.6 k	62.7
2 k	65.7
2.5 k	58.9
3.15 k	52.6
4 k	61.6
5 k	65.5
Standard value	Rw (C ; Ctr) (dB) = 50 (-2 ; -6)

Special Conditions for Building Systems > Rw 45 to Rw 50

- 125 Hz > 30 dB
- 1000Hz > 45 dB

Thermal Values

Thermal Resistance/U Values may be improved with the addition of infill.
 For more compatible options, please contact our offices.
 The purpose of this test concentrates on Acoustic Performance Only.

